

What is the Countywide Plan?

In 2010, the Board of Supervisors set out to establish a vision for the future of the county as a whole, and subsequently adopted a Countywide Vision in 2011 after two years of input from the community and the county's 24 cities and towns. Following the adoption of the Countywide Vision, which calls for the creation of a "complete county", the Board adopted the County paradigm and job statements in 2012.

In 2015, San Bernardino County launched an effort to go further than any county or city has ever gone with a general plan by creating a web-based comprehensive "complete county" plan.

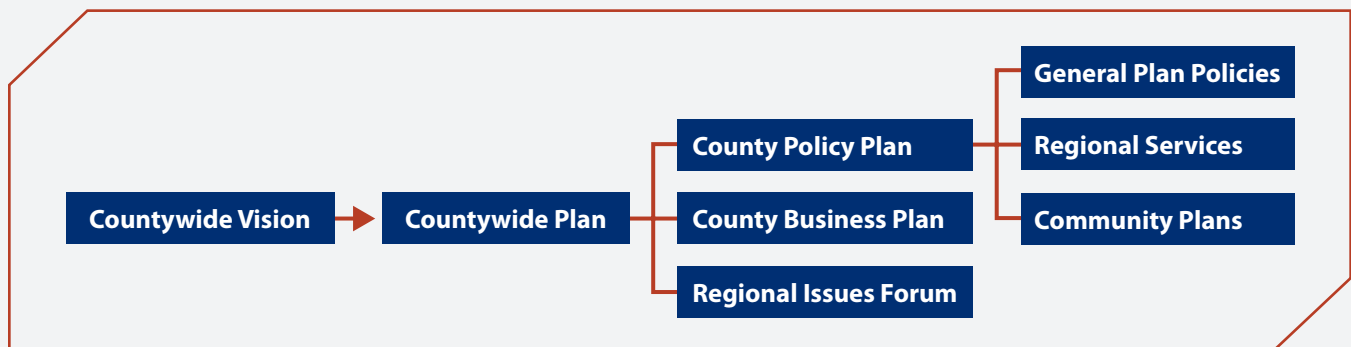
General plans are almost always strictly rule books for guiding development and growth. San Bernardino County's General Plan, last updated in 2007, will go well beyond a traditional general plan to become a comprehensive Countywide Plan that complements and informs the Countywide Vision by taking into account all services—not just land-use planning—provided by County Government, and the unique values and priorities of each unincorporated community. It will serve as a guide for County decision-making, financial planning, and communications.

With a target adoption date of 2018, the Countywide Plan's web-based format will provide a wealth of easily accessible data on how the County operates, and allow independent research using County data and information.

What are the Components of the Countywide Plan?

Driven by the **Countywide Vision**, the Countywide Plan will include:

- A **County Policy Plan**, which will be an update and expansion of the County's General Plan and Community Plans for the unincorporated areas. It will be a new approach to county planning with a Regional Services Plan for social services, healthcare services, public safety, and other regional county services in both incorporated and unincorporated areas. Additionally, an Environmental Impact Report will be prepared providing environmental clearance for the County Policy Plan and facilitate streamlined CEQA review for future planning and development projects.
- A **County Business Plan**, which will contain governance policies and operational metrics that outline the County's approach to providing municipal and regional services.
- A **Regional Issues Forum**, which will be an online resource for sharing information and resources related to issues confronting the County as a whole, including the work of the Countywide Vision element groups.





What is a Community Plan?

The purpose of a **Community Plan** is to guide the future use, character and independent identity of a community. Community plans currently identify land use goals and policies unique to each community. They outline how the County of San Bernardino will manage and address growth issues while recognizing the special attributes unique to each unincorporated community. The County has 14 Community Plans currently in use, which were adopted in 2007, except for Oak Hills, which was adopted in 2013.

How can I get involved in my Community Plan?

The public is encouraged to engage in the planning process by attending outreach events and staying connected through the website: www.countywideplan.com/cp. On this site, the County will have information on meetings and links to provide your input through surveys, social media, photographs, and email.

Have more questions? Send an email to CommunityPlans@lus.sbcounty.gov. You can also visit the website to get on your community's email list to be notified when the planning process will begin.

Don't we already have a Community Plan?

The Community Plans currently in use will be updated to provide a higher level of community specificity, which is needed to effectively address issues at the community level, due to the County's geographic diversity and complexity. By working with local residents to identify community aspirations and actions, the new Community Plans will become more action-oriented and will serve as a guide to better assist communities as they consider growth and change to meet the community's future needs.

How can I help my community obtain improvements?

The Community Plans will include a **Community Development Toolkit** to help residents engage in self-help and/or partnership activities that will facilitate the changes they would like to see in their community. Toolkits will include guidance and information links on a wide range of community improvement and development issues, such as:

- How to create a nonprofit community development corporation
- Guidelines for organizing a farmers market
- Methods, tools and process for establishing and maintaining a community park
- Process for creating a special district for landscaping, street lights, roads, etc.

Get Involved & Stay Connected

countywideplan.com

CountywidePlan@lus.sbcounty.gov

countywideplan.com/cp

CommunityPlans@lus.sbcounty.gov

 [@CountywidePlan](https://twitter.com/CountywidePlan)

 facebook.com/countywideplan