

## What is the Countywide Plan?

In 2010, the Board of Supervisors set out to establish a vision for the future of the county as a whole, and subsequently adopted a Countywide Vision in 2011 after two years of input from the community and the county's 24 cities and towns. Following the adoption of the Countywide Vision, which calls for the creation of a "complete county", the Board adopted the County paradigm and job statements in 2012.

In 2015, San Bernardino County launched an effort to go further than any county or city has ever gone with a general plan by creating a web-based comprehensive "complete county" plan.

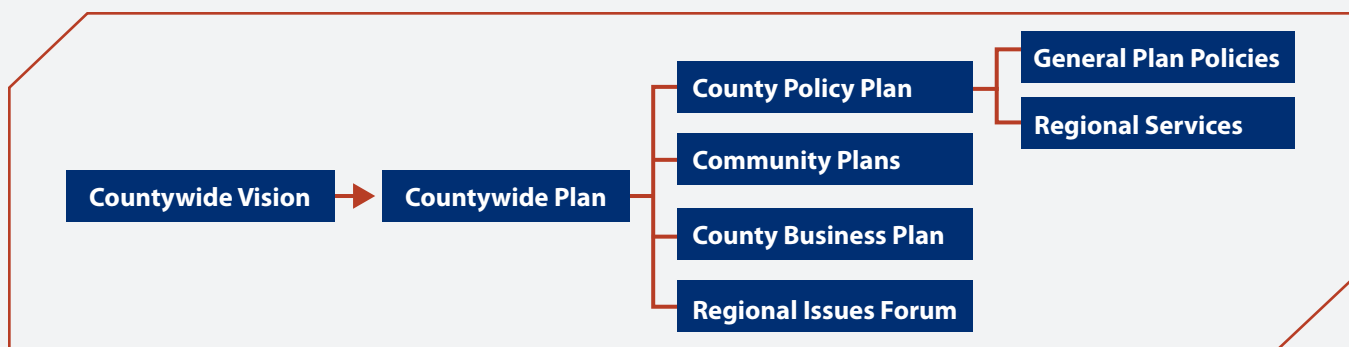
General plans are almost always strictly rule books for guiding development and growth. San Bernardino County's General Plan, last updated in 2007, will go well beyond a traditional general plan to become a comprehensive Countywide Plan that complements and informs the Countywide Vision by taking into account all services—not just land-use planning—provided by County Government, and the unique values and priorities of each unincorporated community. It will serve as a guide for County decision-making, financial planning, and communications.

With a target adoption date of 2018, the Countywide Plan's web-based format will provide a wealth of easily accessible data on how the County operates, and allow independent research using County data and information.

## What are the Components of the Countywide Plan?

Driven by the **Countywide Vision**, the Countywide Plan will include:

- A **County Policy Plan**, which will be an update and expansion of the County's General Plan for the unincorporated areas. In a new approach to county planning, it will also address supportive services for adults and children, healthcare, public safety, and other regional county services provided to both incorporated and unincorporated areas. An Environmental Impact Report will be prepared providing environmental clearance for the County Policy Plan and facilitate streamlined CEQA review for future planning and development projects.
- A **Community Plans Continuum**, which will be a new system of community planning that articulates what is important to each community, with a greater focus on community self-reliance, grass-roots action, and implementation. Goals, policies, land use, and infrastructure decisions will be addressed in the Policy Plan.
- A **County Business Plan**, which will contain governance policies and operational metrics that outline the County's approach to providing municipal and regional services.
- A **Regional Issues Forum**, which will be an online resource for sharing information and resources related to issues confronting the county as a whole, including the work of the Countywide Vision element groups.



## What is a Community Plan?

The **Community Plans** are guides for communities to create their future character and independent identity, as identified in the workshops with community values and aspirations, through completion of a community action plan. The new Community Plans replace any existing 2007/2014 Community Plans, with a greater focus on community self-reliance, grass-roots action, and implementation. Goals, policies, land use, and infrastructure decisions will be addressed in the Policy Plan component of the Countywide Plan.

## How can I get involved in my Community Plan?

The public is encouraged to engage in the planning process by attending outreach events and staying connected through the website: [www.countywideplan.com/cp](http://www.countywideplan.com/cp). On this site, the County will have information on meetings and links to provide your input through surveys, social media, photographs, and email.

**Have more questions? Send an email to [CommunityPlans@lus.sbcounty.gov](mailto:CommunityPlans@lus.sbcounty.gov).** You can also visit the website to get on your community's email list to be notified when the planning process will begin.

## Don't we already have a Community Plan?

As part of the Countywide Plan preparation, the County is taking a fresh look at the purpose and functionality of these documents. The updated Community Plans will become more action-oriented and focus on specific tools and strategies to improve each individual community, along with a set of community-driven values and aspirations. The new Community Plans will continue to include information on each community's background, character, issues, concerns, and priorities—updated and shaped by the input received during community workshops.

## How can I help my community obtain improvements?

The Community Plans will include an **Action Plans** section to help residents engage and partner with others to facilitate positive changes in their community. A **Community Development Toolkit** is also under development to provide guidance and information links on a wide range of community improvement and development issues, such as:

- How to create a nonprofit community development corporation
- Guidelines for organizing a farmers market
- Methods, tools and process for establishing and maintaining a community park
- Process for creating a special district for landscaping, street lights, roads, etc.

## Get Involved & Stay Connected