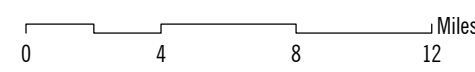
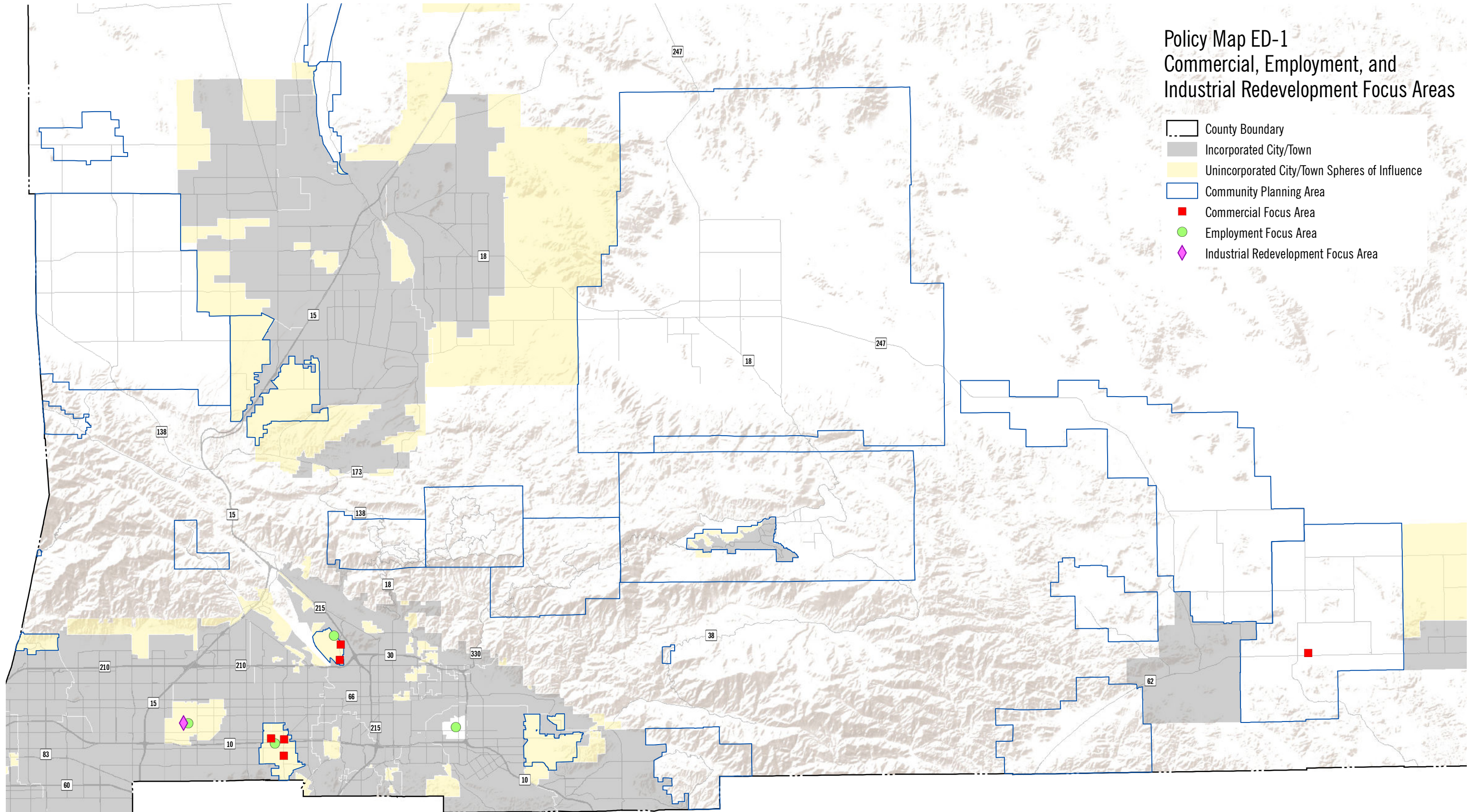


# Policy Map ED-1 Commercial, Employment, and Industrial Redevelopment Focus Areas

-  County Boundary
-  Incorporated City/Town
-  Unincorporated City/Town Spheres of Influence
-  Community Planning Area
-  Commercial Focus Area
-  Employment Focus Area
-  Industrial Redevelopment Focus Area



Date: 8/21/2018 Created by PlaceWorks | Source: PlaceWorks 2018

**DRAFT**



**COUNTYWIDE PLAN  
POLICY PLAN**