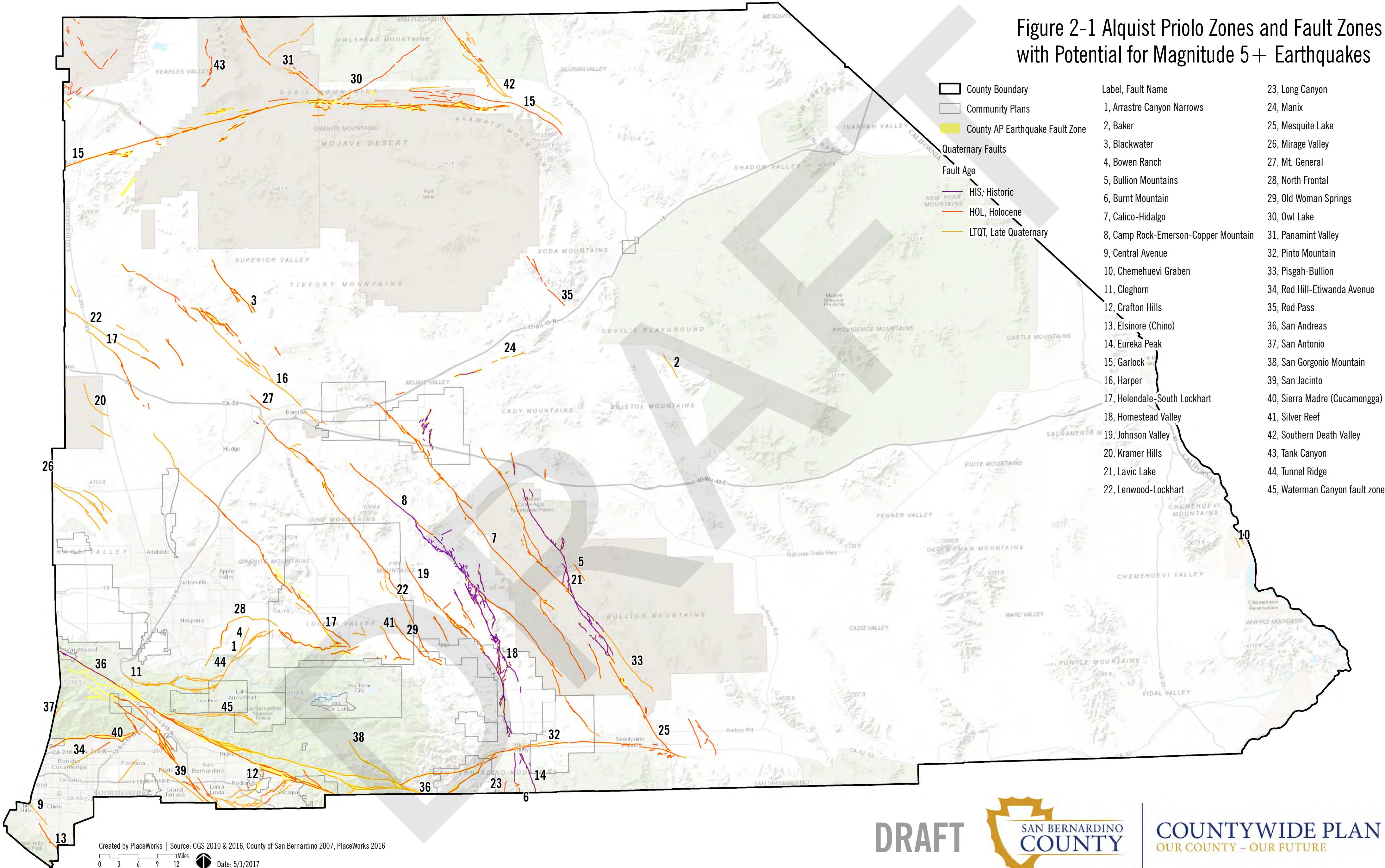


Figure 2-1 Alquist Priolo Zones and Fault Zones with Potential for Magnitude 5+ Earthquakes



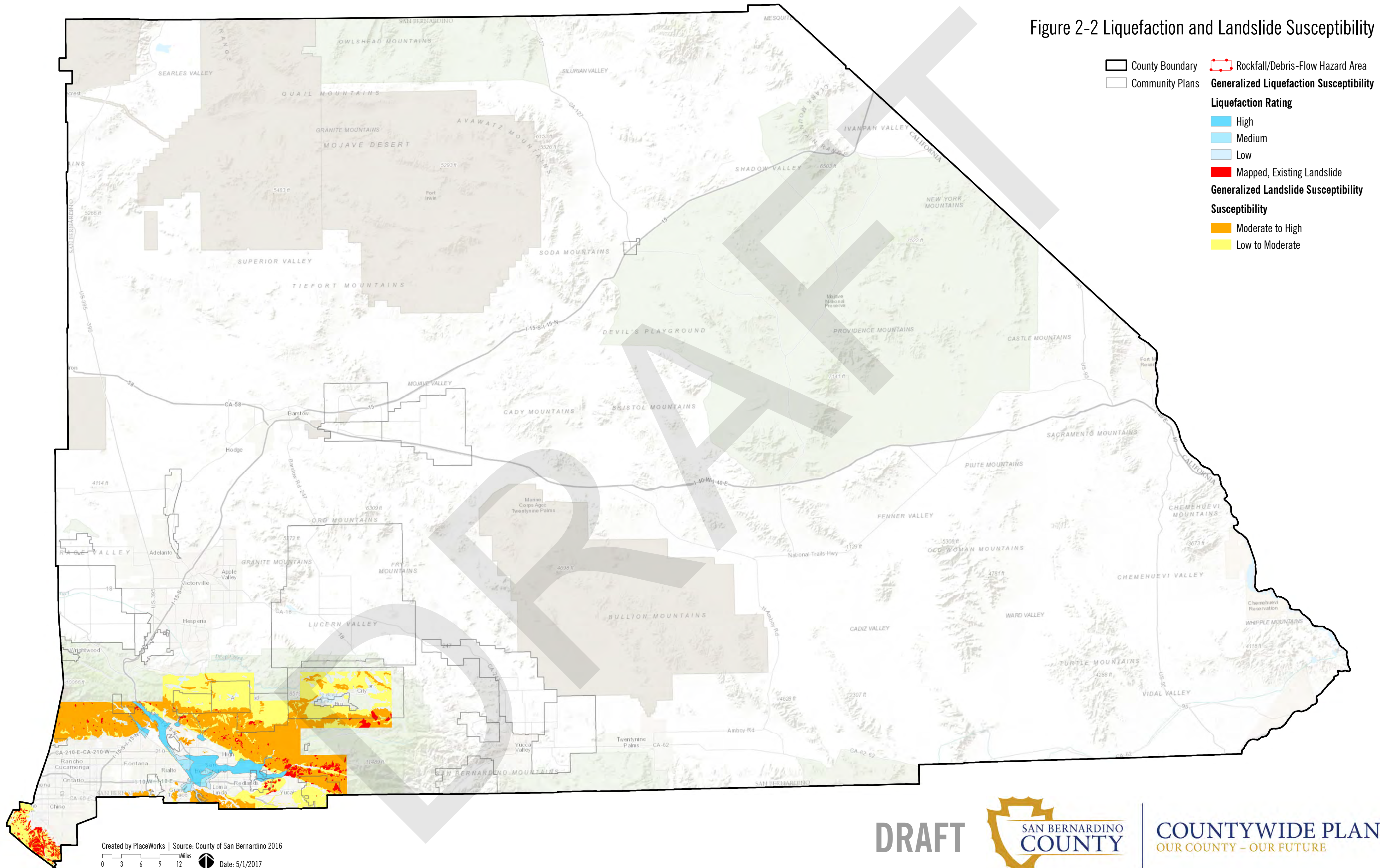
Created by PlaceWorks | Source: CGS 2010 & 2016, County of San Bernardino 2007, PlaceWorks 2016

DRAFT



COUNTYWIDE PLAN  
OUR COUNTY - OUR FUTURE

Figure 2-2 Liquefaction and Landslide Susceptibility



Created by PlaceWorks | Source: County of San Bernardino 2016

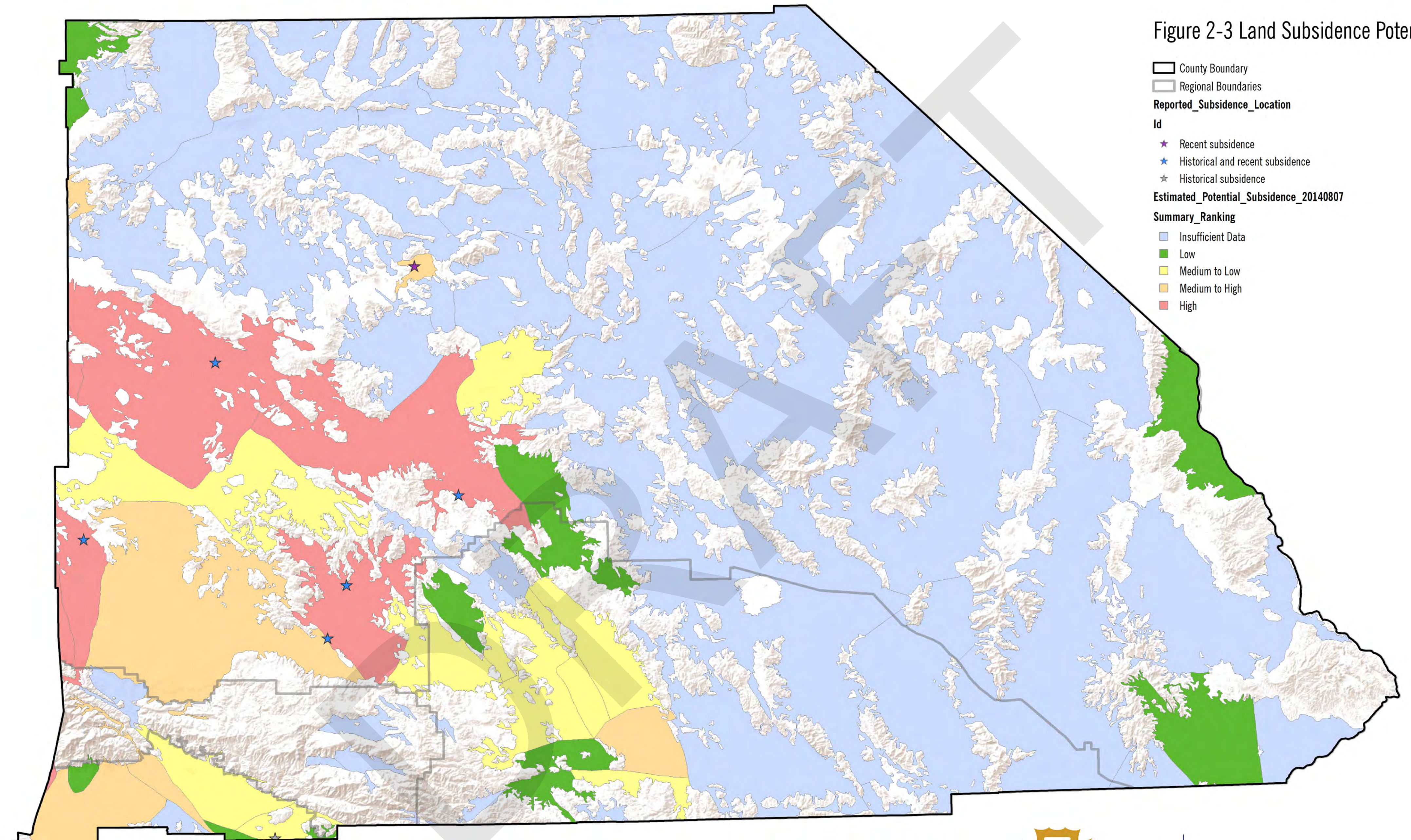
0 3 6 9 12 Miles Date: 5/1/2017

DRAFT



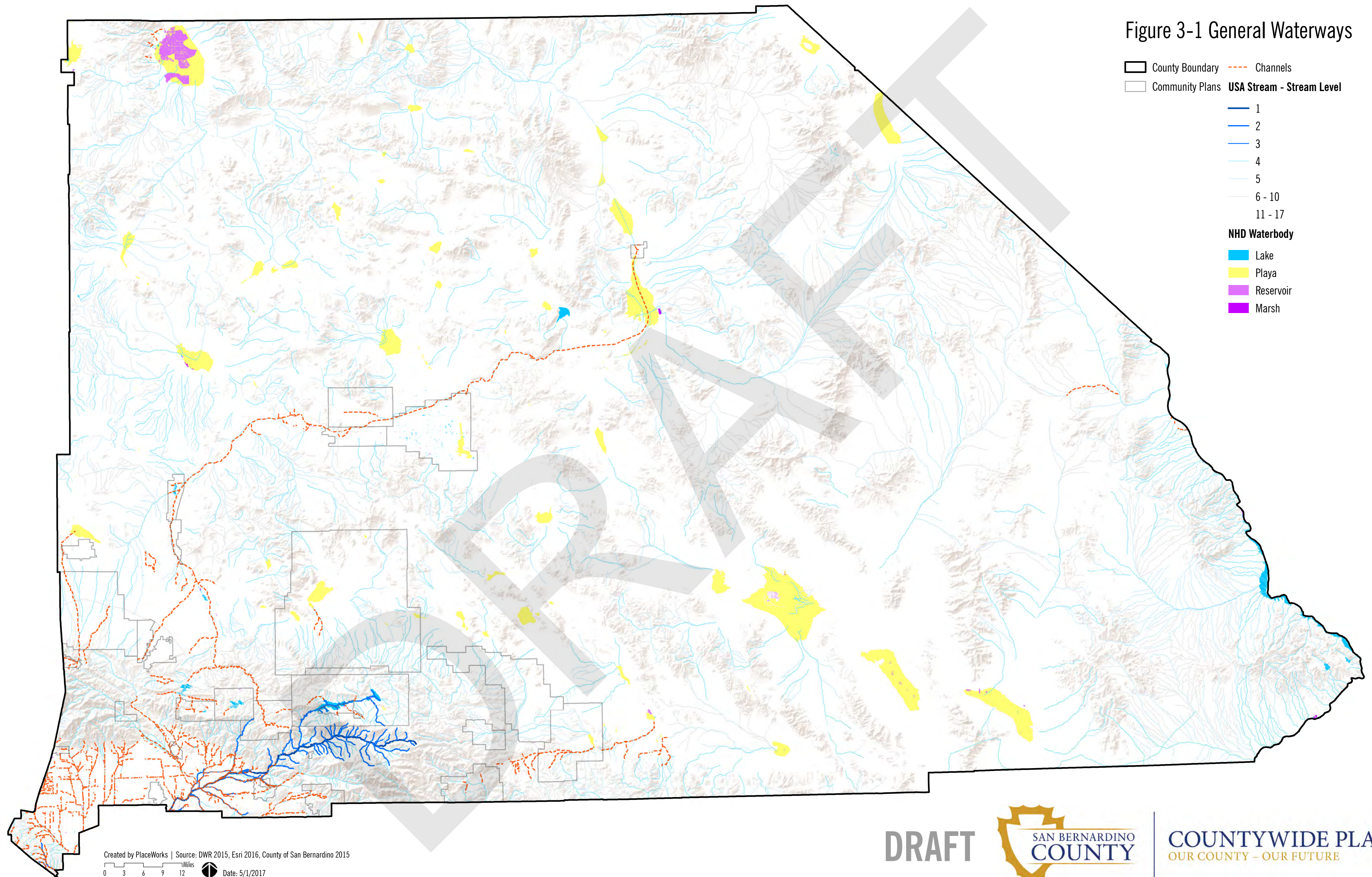
COUNTYWIDE PLAN  
OUR COUNTY - OUR FUTURE

Figure 2-3 Land Subsidence Potential



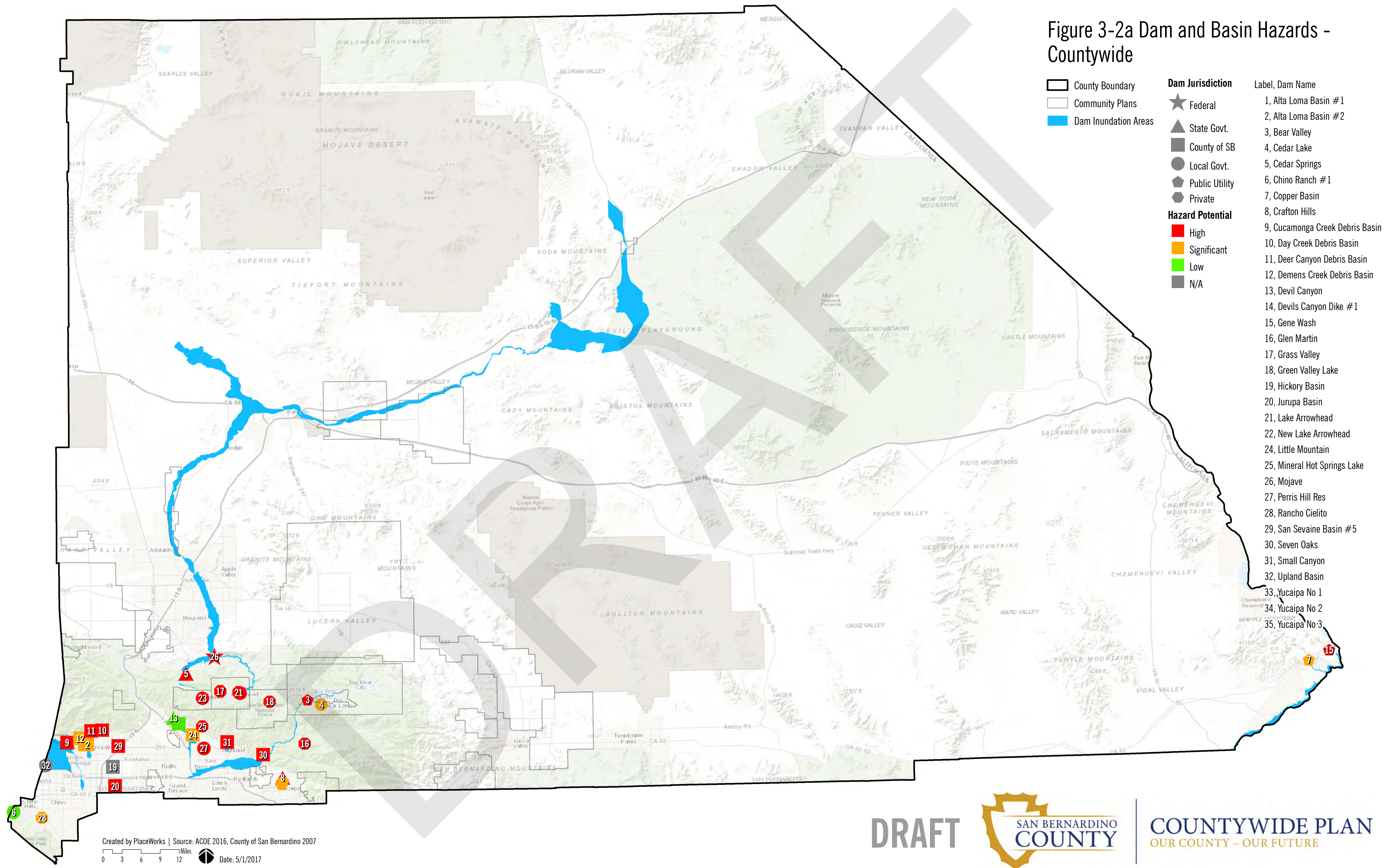
- County Boundary
- Regional Boundaries
- Reported\_Subsidence\_Location**
- Id**
- Recent subsidence
- Historical and recent subsidence
- Historical subsidence
- Estimated\_Potential\_Subsidence\_20140807**
- Summary\_Ranking**
- Insufficient Data
- Low
- Medium to Low
- Medium to High
- High

Figure 3-1 General Waterways



- County Boundary
- Community Plans
- Channels
- USA Stream - Stream Level
  - 1
  - 2
  - 3
  - 4
  - 5
  - 6 - 10
  - 11 - 17
- NHD Waterbody
  - Lake
  - Playa
  - Reservoir
  - Marsh

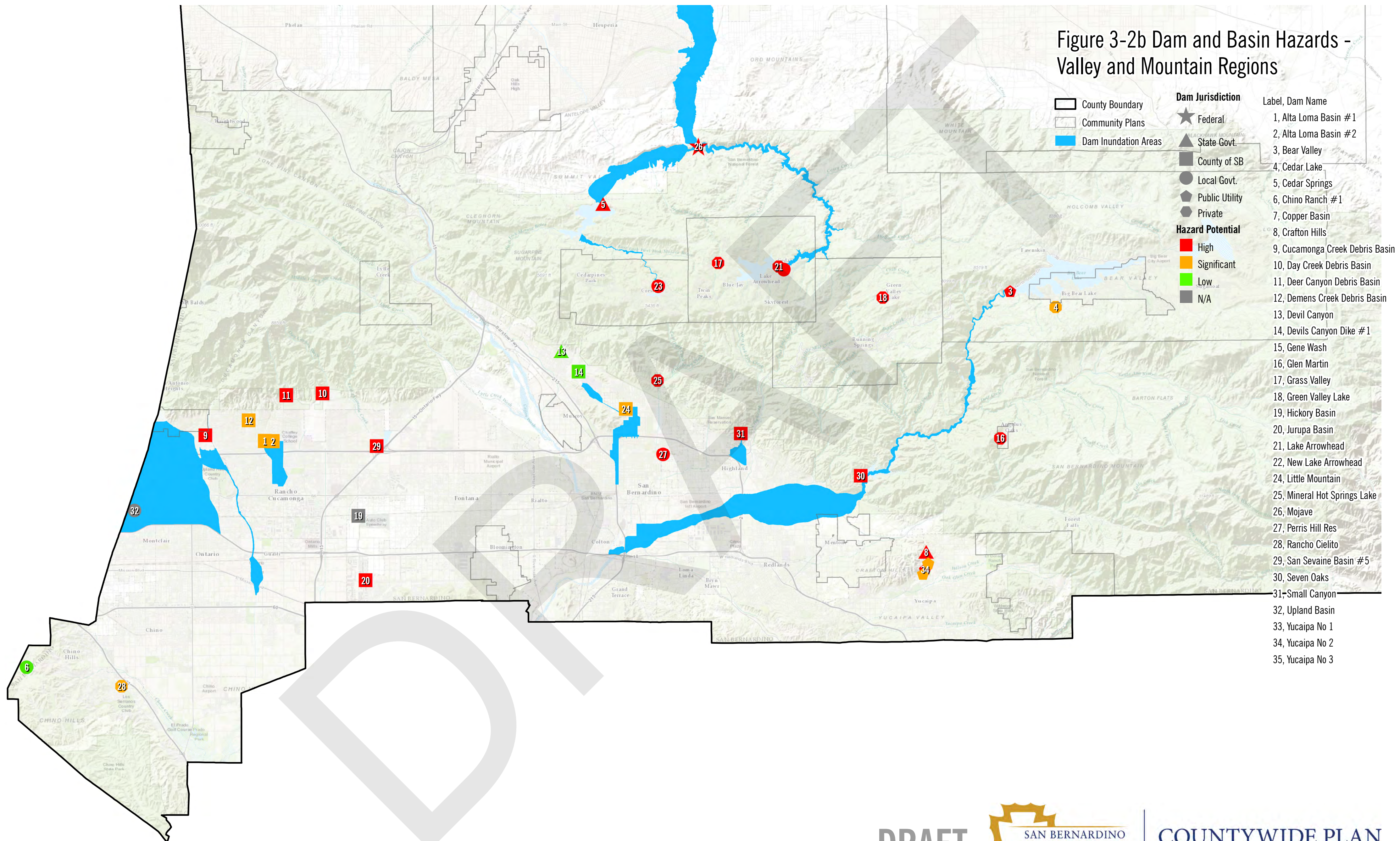
# Figure 3-2a Dam and Basin Hazards - Countywide



- |                      |                         |                                 |
|----------------------|-------------------------|---------------------------------|
| County Boundary      | <b>Dam Jurisdiction</b> | <b>Label, Dam Name</b>          |
| Community Plans      | Federal                 | 1, Alta Loma Basin #1           |
| Dam Inundation Areas | State Govt.             | 2, Alta Loma Basin #2           |
|                      | County of SB            | 3, Bear Valley                  |
|                      | Local Govt.             | 4, Cedar Lake                   |
|                      | Public Utility          | 5, Cedar Springs                |
|                      | Private                 | 6, Chino Ranch #1               |
|                      | <b>Hazard Potential</b> | 7, Copper Basin                 |
|                      | High                    | 8, Crafton Hills                |
|                      | Significant             | 9, Cucamonga Creek Debris Basin |
|                      | Low                     | 10, Day Creek Debris Basin      |
|                      | N/A                     | 11, Deer Canyon Debris Basin    |
|                      |                         | 12, Demens Creek Debris Basin   |
|                      |                         | 13, Devil Canyon                |
|                      |                         | 14, Devils Canyon Dike #1       |
|                      |                         | 15, Gene Wash                   |
|                      |                         | 16, Glen Martin                 |
|                      |                         | 17, Grass Valley                |
|                      |                         | 18, Green Valley Lake           |
|                      |                         | 19, Hickory Basin               |
|                      |                         | 20, Jurupa Basin                |
|                      |                         | 21, Lake Arrowhead              |
|                      |                         | 22, New Lake Arrowhead          |
|                      |                         | 24, Little Mountain             |
|                      |                         | 25, Mineral Hot Springs Lake    |
|                      |                         | 26, Mojave                      |
|                      |                         | 27, Perris Hill Res             |
|                      |                         | 28, Rancho Cielito              |
|                      |                         | 29, San Sevaine Basin #5        |
|                      |                         | 30, Seven Oaks                  |
|                      |                         | 31, Small Canyon                |
|                      |                         | 32, Upland Basin                |
|                      |                         | 33, Yucaipa No 1                |
|                      |                         | 34, Yucaipa No 2                |
|                      |                         | 35, Yucaipa No 3                |

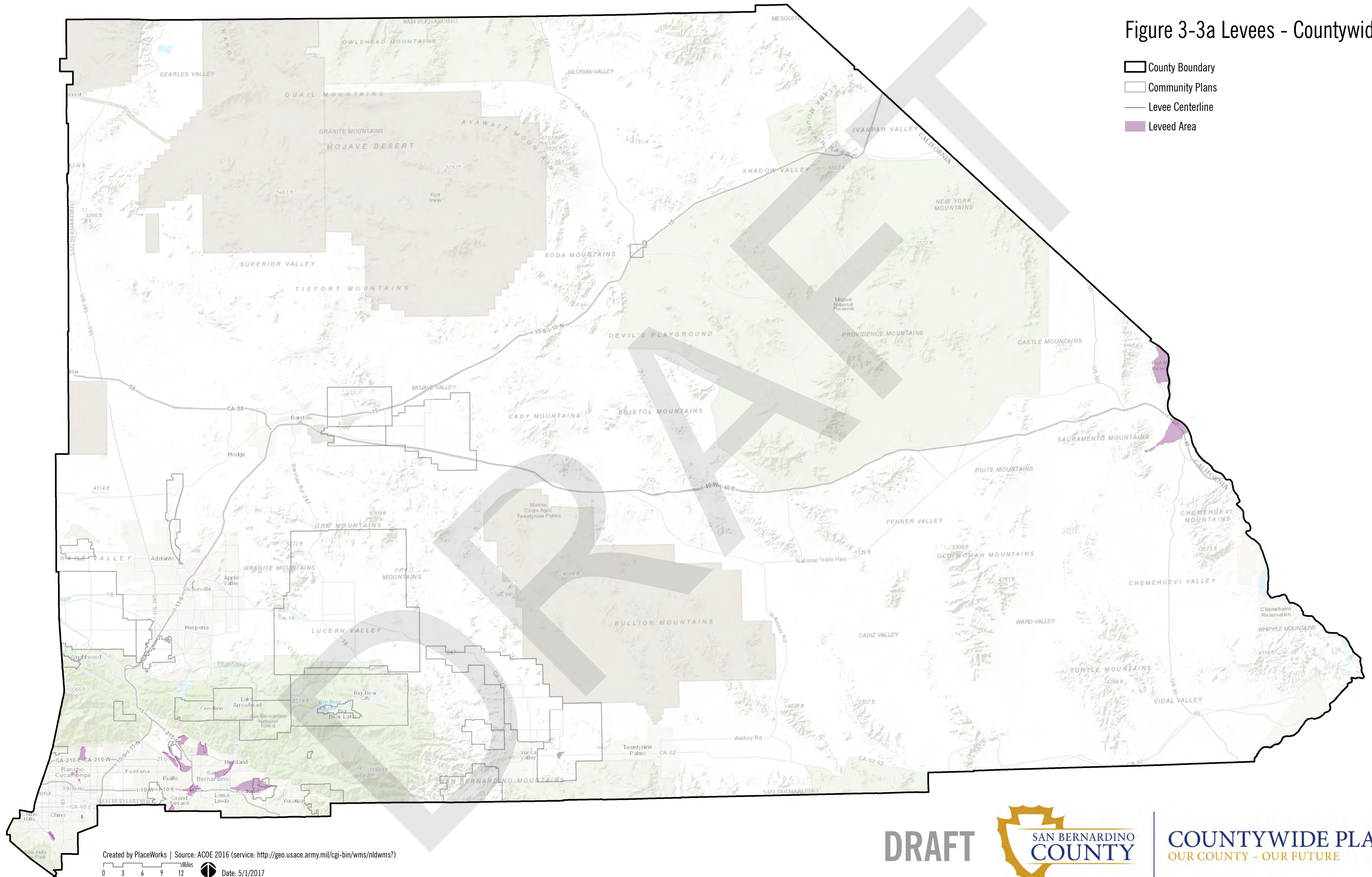
Created by PlaceWorks | Source: ACOE 2016, County of San Bernardino 2007  
 0 3 6 9 12 Miles Date: 5/1/2017

# Figure 3-2b Dam and Basin Hazards - Valley and Mountain Regions



- | Label, Dam Name                 |
|---------------------------------|
| 1, Alta Loma Basin #1           |
| 2, Alta Loma Basin #2           |
| 3, Bear Valley                  |
| 4, Cedar Lake                   |
| 5, Cedar Springs                |
| 6, Chino Ranch #1               |
| 7, Copper Basin                 |
| 8, Crafton Hills                |
| 9, Cucamonga Creek Debris Basin |
| 10, Day Creek Debris Basin      |
| 11, Deer Canyon Debris Basin    |
| 12, Demens Creek Debris Basin   |
| 13, Devil Canyon                |
| 14, Devils Canyon Dike #1       |
| 15, Gene Wash                   |
| 16, Glen Martin                 |
| 17, Grass Valley                |
| 18, Green Valley Lake           |
| 19, Hickory Basin               |
| 20, Jurupa Basin                |
| 21, Lake Arrowhead              |
| 22, New Lake Arrowhead          |
| 24, Little Mountain             |
| 25, Mineral Hot Springs Lake    |
| 26, Mojave                      |
| 27, Perris Hill Res             |
| 28, Rancho Cielito              |
| 29, San Sevaine Basin #5        |
| 30, Seven Oaks                  |
| 31, Small Canyon                |
| 32, Upland Basin                |
| 33, Yucaipa No 1                |
| 34, Yucaipa No 2                |
| 35, Yucaipa No 3                |

Figure 3-3a Levees - Countywide



- County Boundary
- Community Plans
- Levee Centerline
- Leveed Area

Created by PlaceWorks | Source: ACOE 2016 (service: <http://geo.usace.army.mil/cgi-bin/wms/nldwms?>)

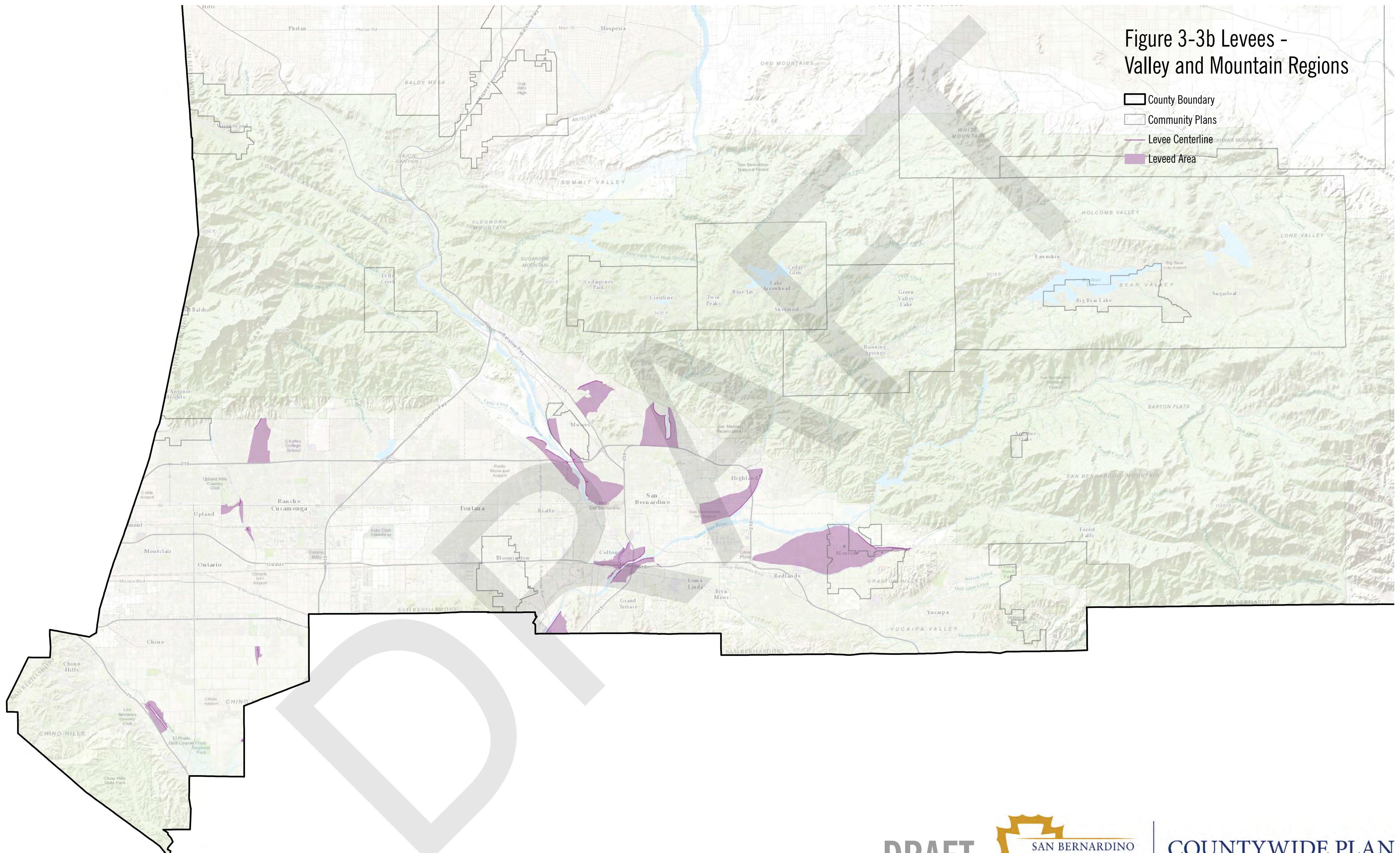
0 3 6 9 12 Miles Date: 5/1/2017

DRAFT



COUNTYWIDE PLAN  
OUR COUNTY - OUR FUTURE

Figure 3-3b Levees - Valley and Mountain Regions



Created by PlaceWorks | Source: ACOE 2016 (service: <http://geo.usace.army.mil/cgi-bin/wms/nldwms?>)

0 3 6 9 12 Miles Date: 5/1/2017

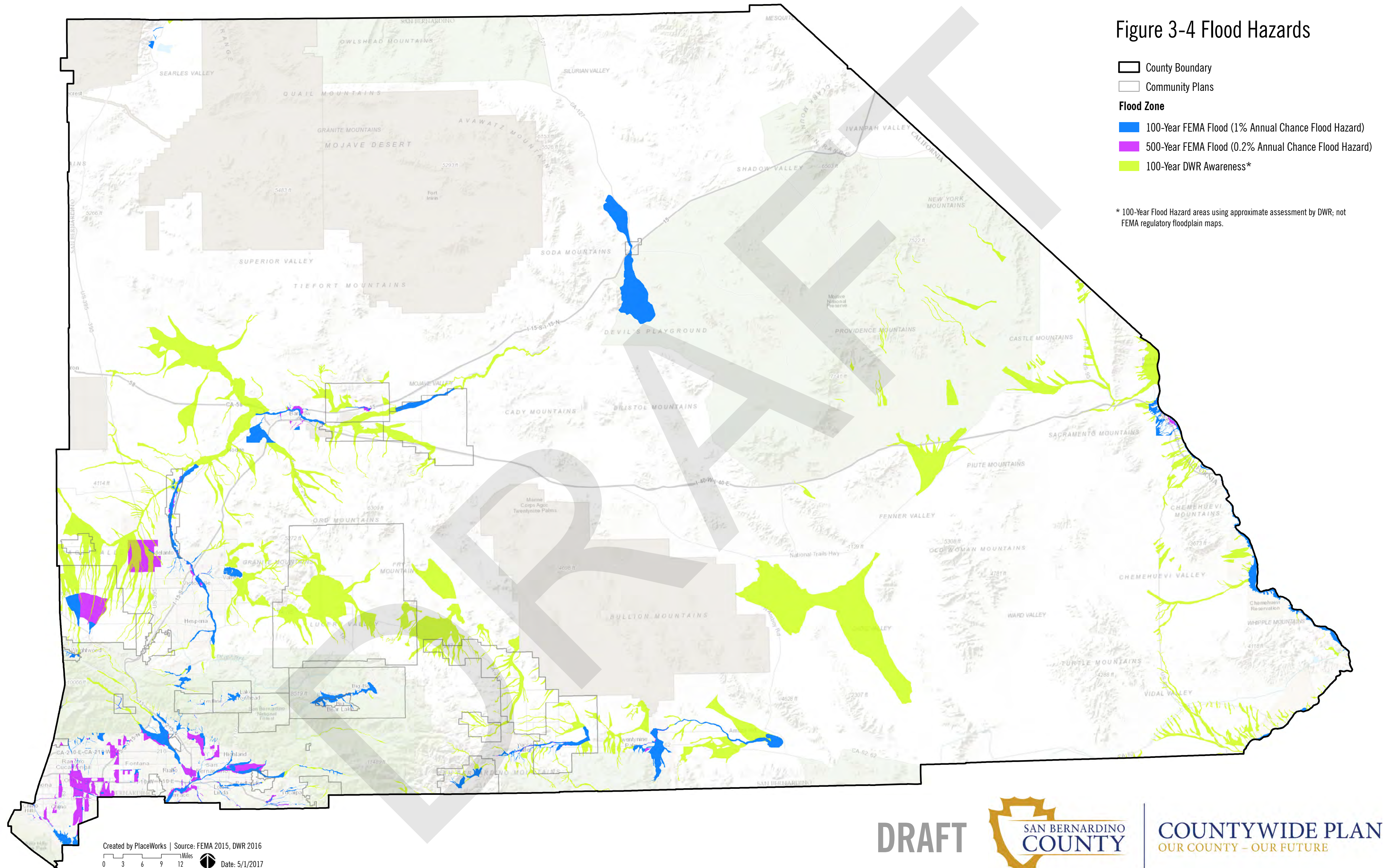
DRAFT



COUNTYWIDE PLAN  
OUR COUNTY - OUR FUTURE



Figure 3-4 Flood Hazards

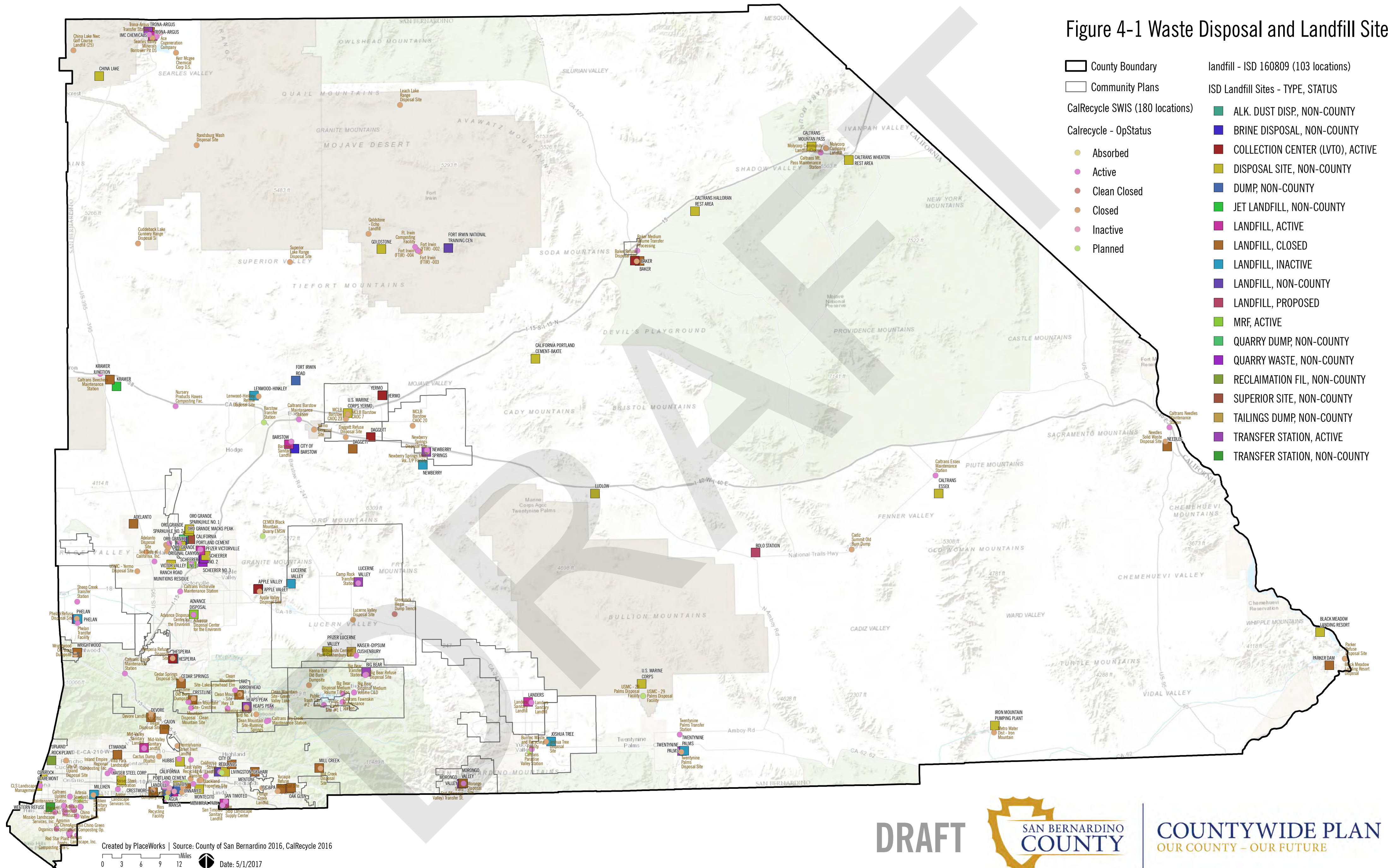


DRAFT



COUNTYWIDE PLAN  
 OUR COUNTY - OUR FUTURE

Figure 4-1 Waste Disposal and Landfill Sites



Created by PlaceWorks | Source: County of San Bernardino 2016, CalRecycle 2016

0 3 6 9 12 Miles Date: 5/1/2017

DRAFT



COUNTYWIDE PLAN  
OUR COUNTY - OUR FUTURE

Figure 5-1 Fire History in San Bernardino County

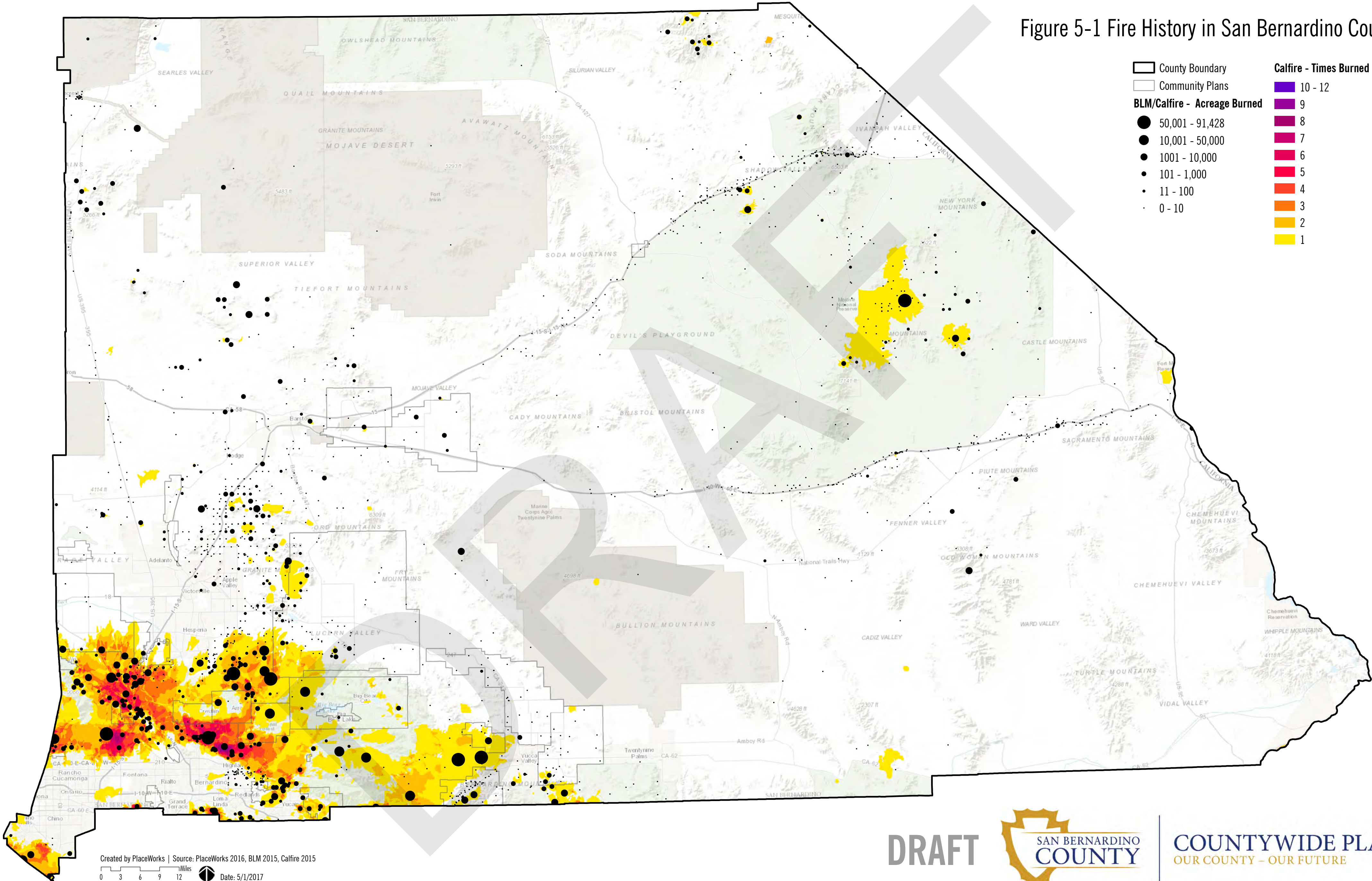
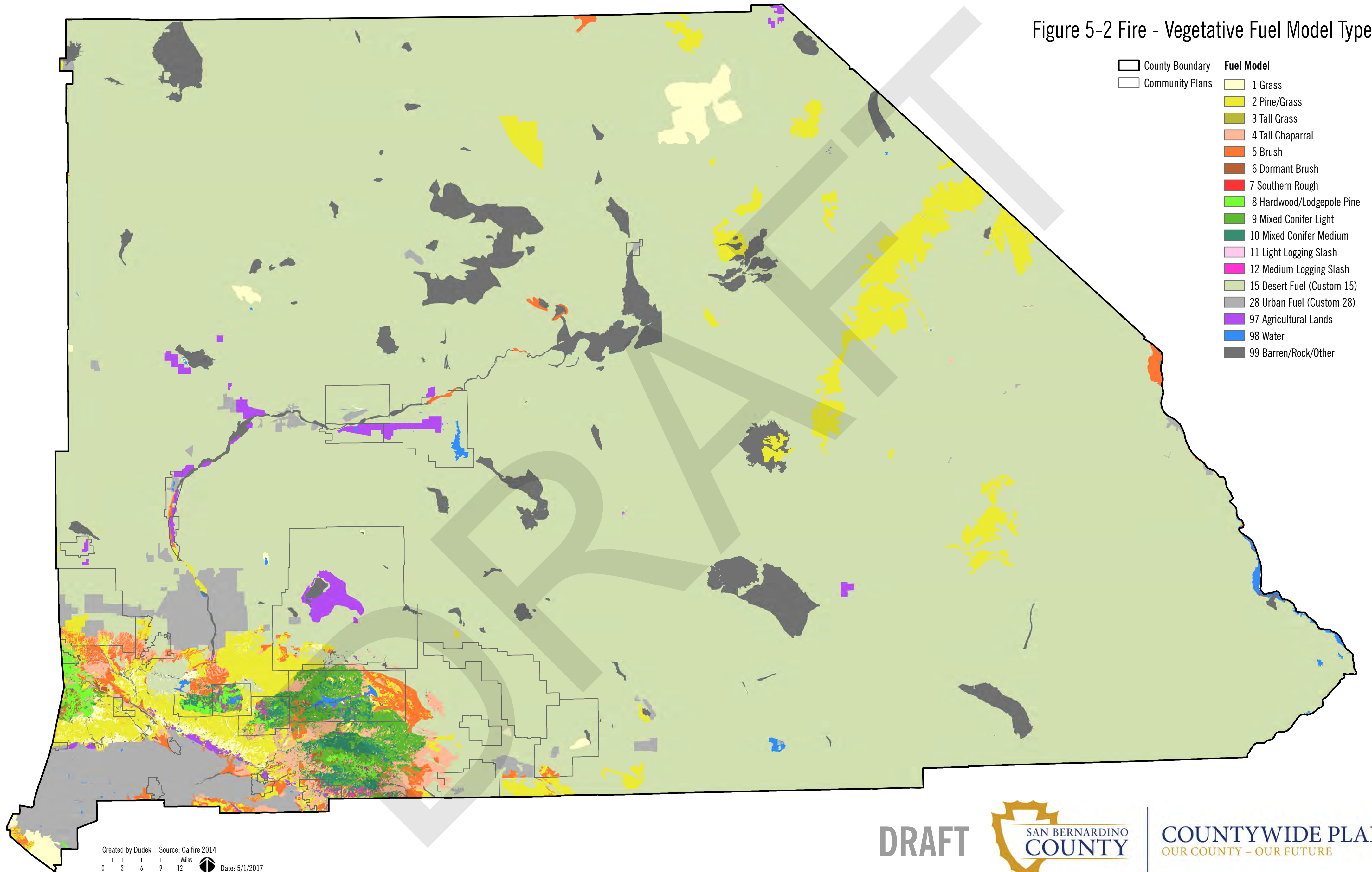
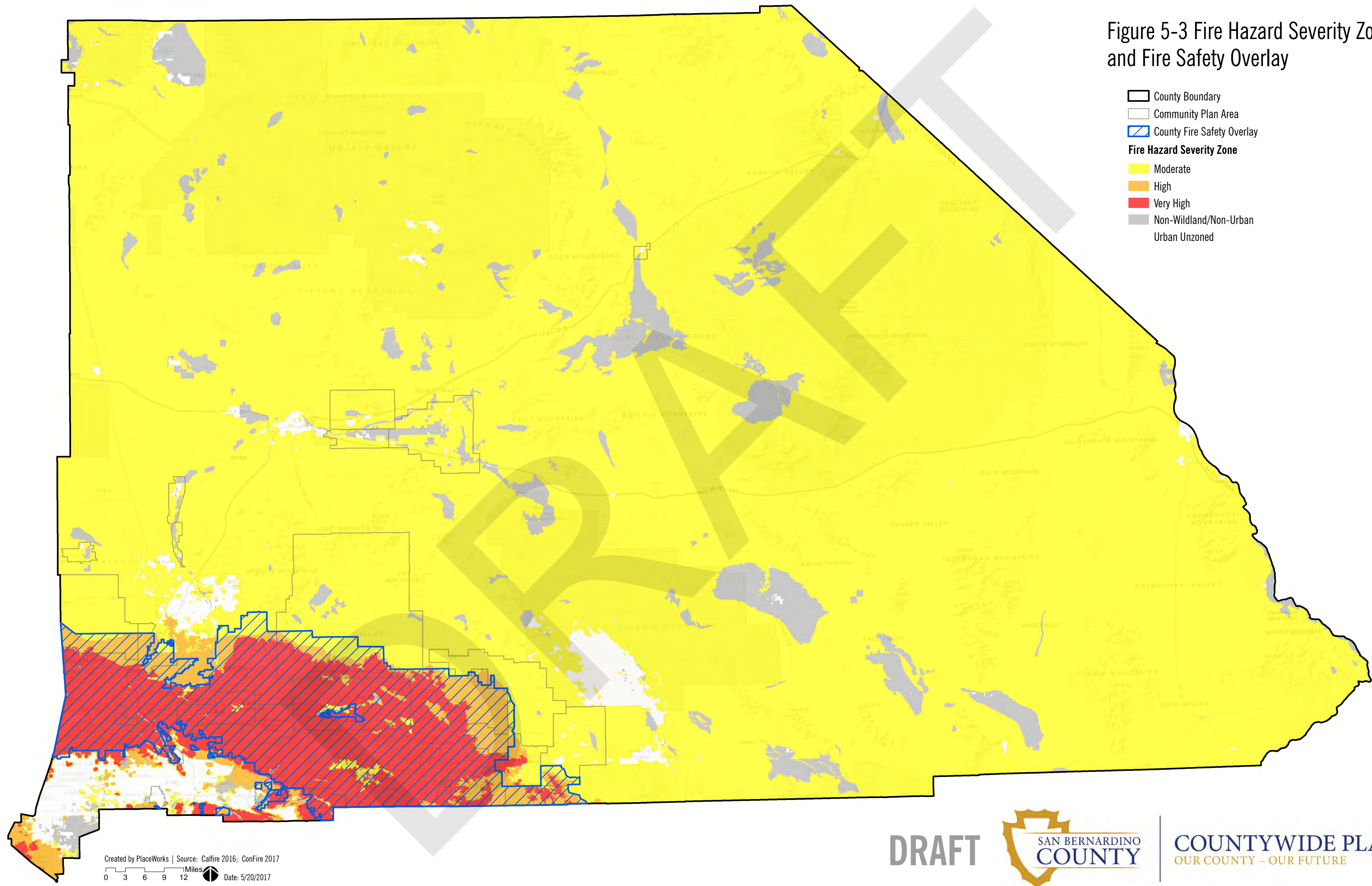


Figure 5-2 Fire - Vegetative Fuel Model Types



- |  |  |
|--|--|
| <ul style="list-style-type: none"> <li>▭ County Boundary</li> <li>▭ Community Plans</li> </ul> | <p><b>Fuel Model</b></p> <ul style="list-style-type: none"> <li>1 Grass</li> <li>2 Pine/Grass</li> <li>3 Tall Grass</li> <li>4 Tall Chaparral</li> <li>5 Brush</li> <li>6 Dormant Brush</li> <li>7 Southern Rough</li> <li>8 Hardwood/Lodgepole Pine</li> <li>9 Mixed Conifer Light</li> <li>10 Mixed Conifer Medium</li> <li>11 Light Logging Slash</li> <li>12 Medium Logging Slash</li> <li>15 Desert Fuel (Custom 15)</li> <li>28 Urban Fuel (Custom 28)</li> <li>97 Agricultural Lands</li> <li>98 Water</li> <li>99 Barren/Rock/Other</li> </ul> |
|--|--|

Figure 5-3 Fire Hazard Severity Zones and Fire Safety Overlay



- County Boundary
- Community Plan Area
- County Fire Safety Overlay
- Fire Hazard Severity Zone**
- Moderate
- High
- Very High
- Non-Wildland/Non-Urban Urban Unzoned

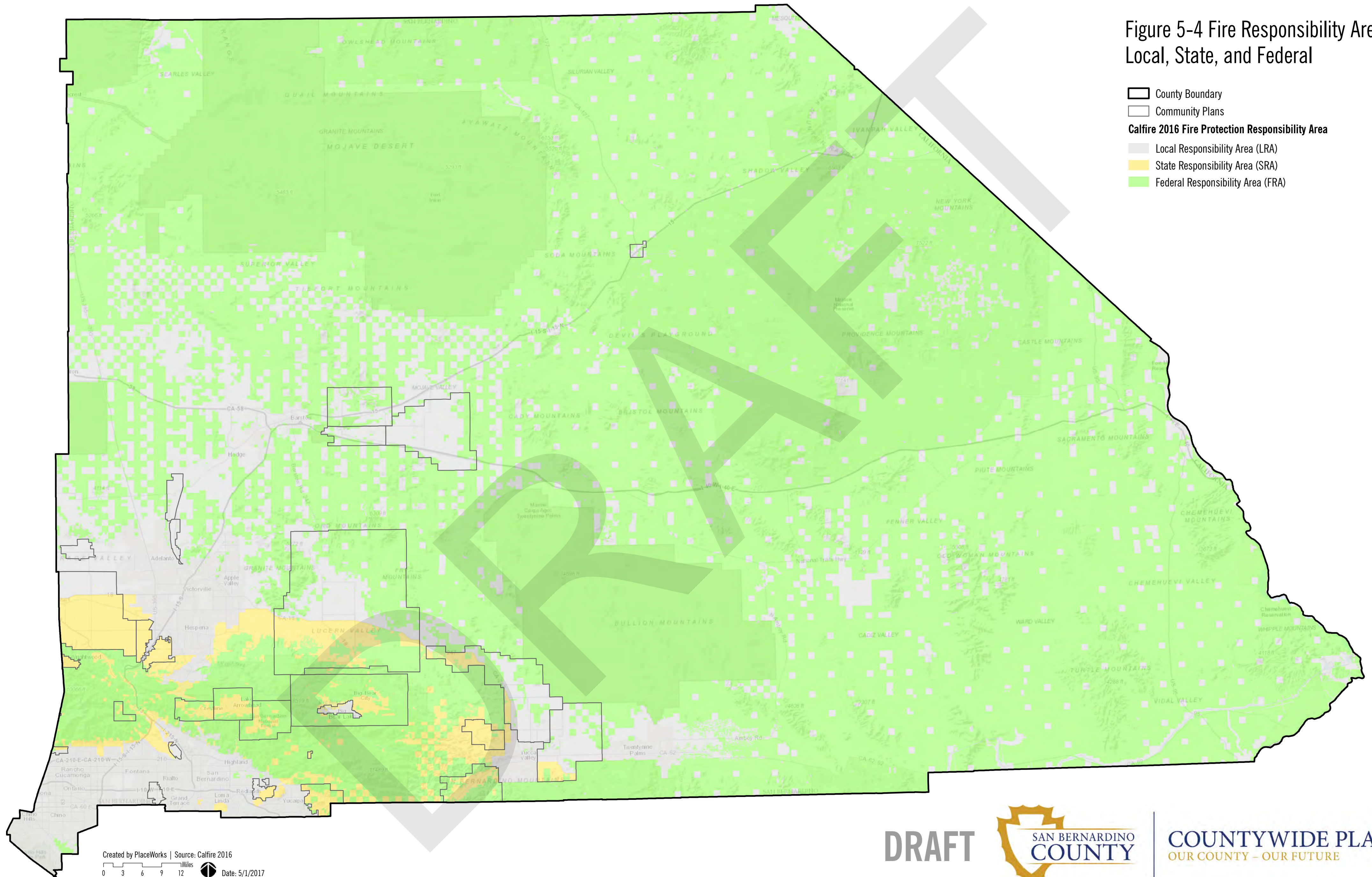
Created by PlaceWorks | Source: CalFire 2016; ConFire 2017  
 0 3 6 9 12 Miles Date: 5/20/2017

DRAFT



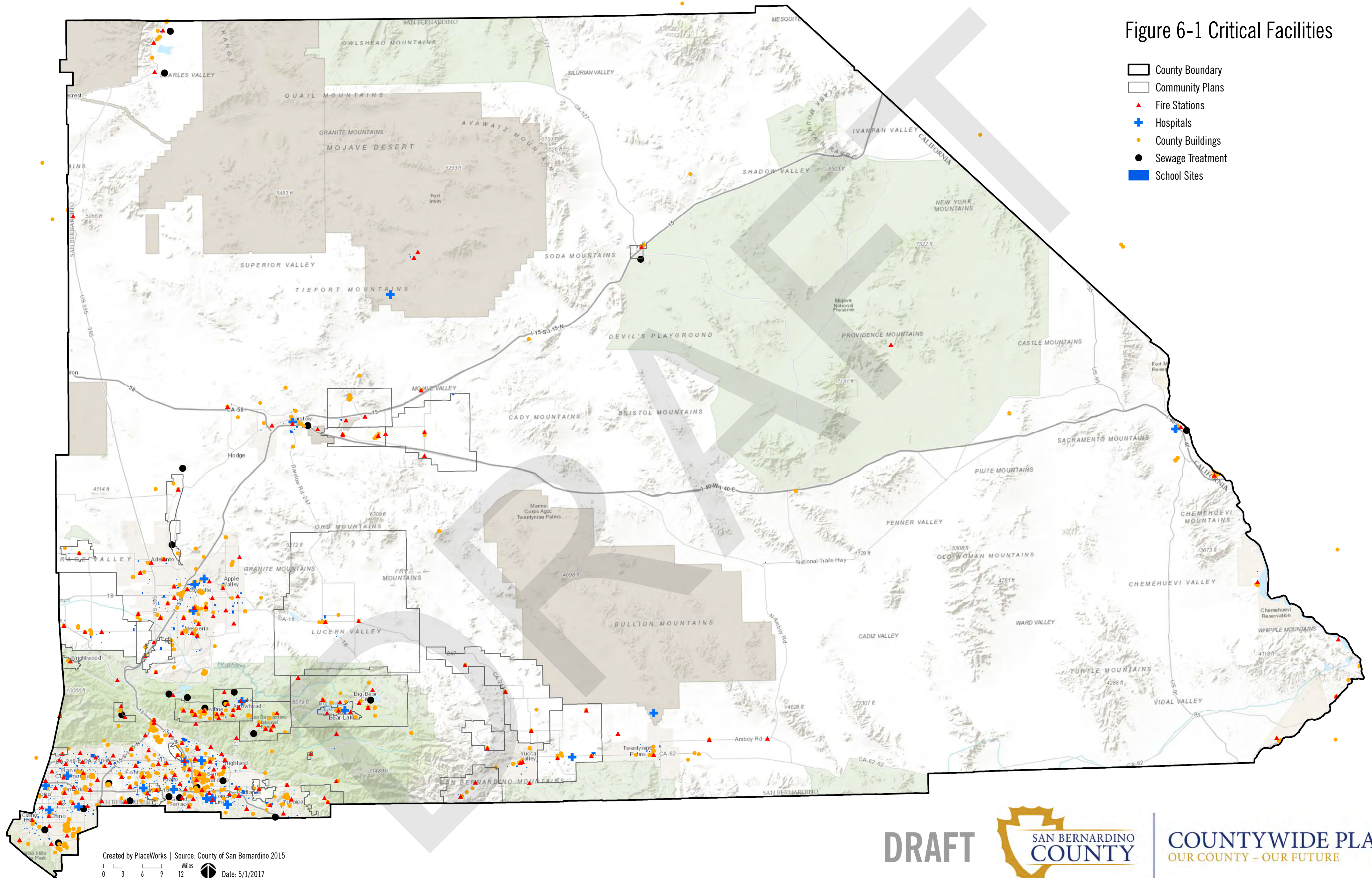
COUNTYWIDE PLAN  
 OUR COUNTY - OUR FUTURE

Figure 5-4 Fire Responsibility Areas - Local, State, and Federal



- County Boundary
- Community Plans
- Calfire 2016 Fire Protection Responsibility Area**
  - Local Responsibility Area (LRA)
  - State Responsibility Area (SRA)
  - Federal Responsibility Area (FRA)

Figure 6-1 Critical Facilities



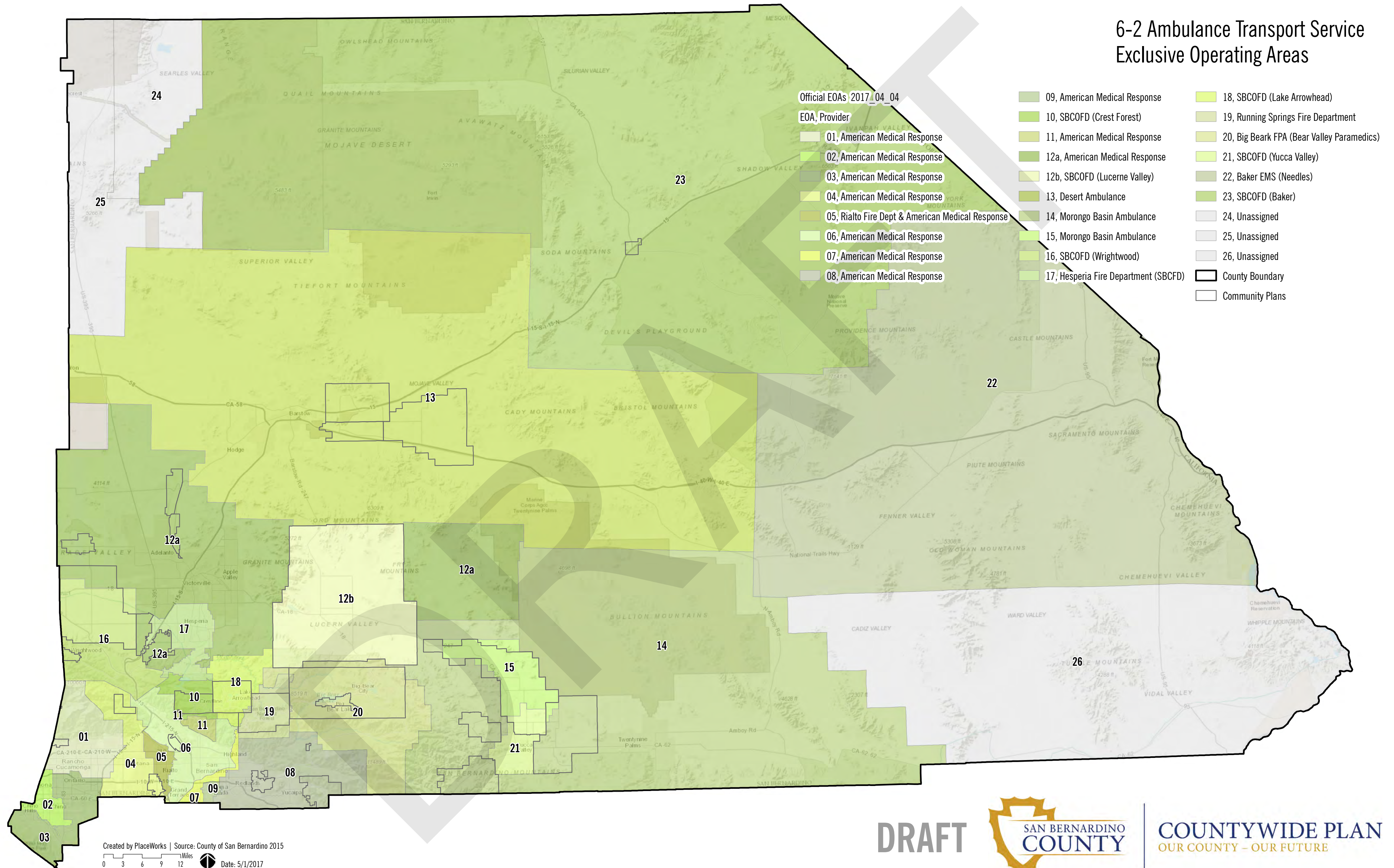
DRAFT



COUNTYWIDE PLAN  
OUR COUNTY - OUR FUTURE

Created by PlaceWorks | Source: County of San Bernardino 2015  
Date: 5/1/2017

# 6-2 Ambulance Transport Service Exclusive Operating Areas






**DRAFT**



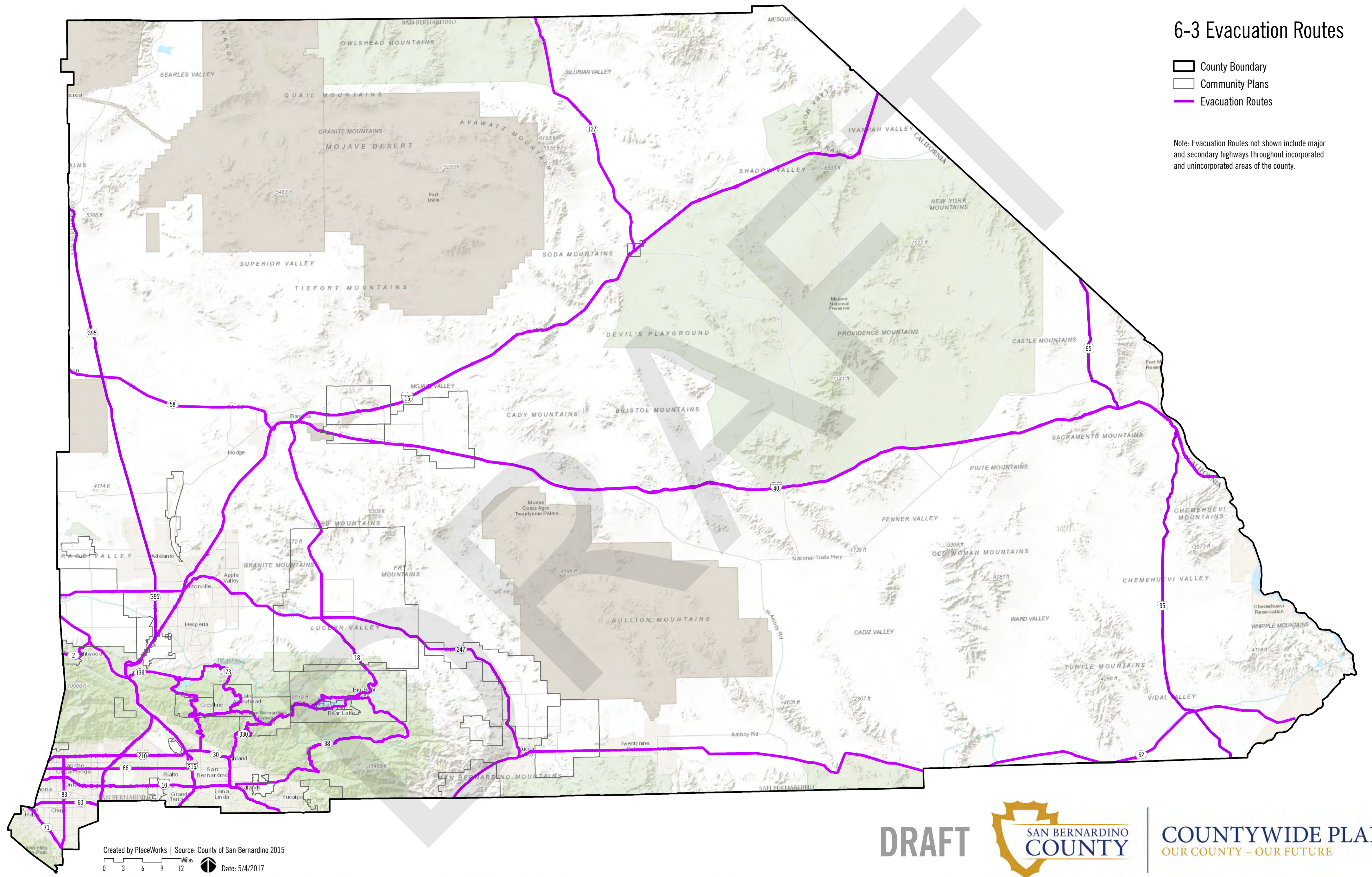
**COUNTYWIDE PLAN**  
OUR COUNTY - OUR FUTURE




# 6-3 Evacuation Routes

-  County Boundary
-  Community Plans
-  Evacuation Routes

Note: Evacuation Routes not shown include major and secondary highways throughout incorporated and unincorporated areas of the county.



Created by PlaceWorks | Source: County of San Bernardino 2015  
 0 3 6 9 12 Miles  Date: 5/4/2017

**DRAFT**



**COUNTYWIDE PLAN**  
 OUR COUNTY - OUR FUTURE